



Sunset View Pet Hospital

627 West Fifth Street
Wilton, Iowa 52778
(563) 732-2118

www.sunsetviewpets.com

A note from your friends at Sunset View

Sunny, warmer days are here and it is time to think about fleas, ticks and mosquitoes. Our newsletter this Spring will be concentrating on those “pesky” pets. Last year was a “terrible” year for mosquitoes and fleas. Many of our clients thought they would never see the end of their flea infestations. It is imperative that you begin your preventatives early to ward off those infestations. Check out the e-mail reminder section, we think several of you might be interested in this service.

We still recommend that a heartworm test be performed before starting your pet on preventative or performed at least every two years if your pet is on a preventative year-round. Make your appointment today.

Our office carries several flea and tick products. Please check with our staff to determine which product will work the best for your pet and environment.

Please keep in mind that pharmaceutical manufacturers will only honor product guarantees when the medications are prescribed by and purchased from the pet's veterinarian. Internet and mail-order catalogs, do not qualify for these guarantees. Also rebates are not usually available from online stores or catalogs. Remember if you need a prescription refilled at any time, a phone call to our office will have it ready for you to pickup with a short time frame, or if you prefer we can drop your prescription in the mail.

Pet Gazette

We want you to know!

Volume 2, Issue 1

Spring 2009

Fleas, ticks and chewing lice can be a year-round problem!

Spring

Flea and tick populations can explode due to more frequent breeding as spring progresses.

Summer

The period of highest risk. Summer temperatures and humidity can quickly lead to flea and tick infestations.

Autumn

The risk continues. In some places, Autumn can be the worst flea and tick season. Fleas and ticks, including the ticks that may carry Lyme disease, remain a threat.

Winter

The interior of the home can provide ideal conditions for fleas to reproduce. Minimize the risk of any infestation.

Tips

To successfully control fleas in your home, all dogs and cats (indoor and outdoor) must be treated with a preventative.

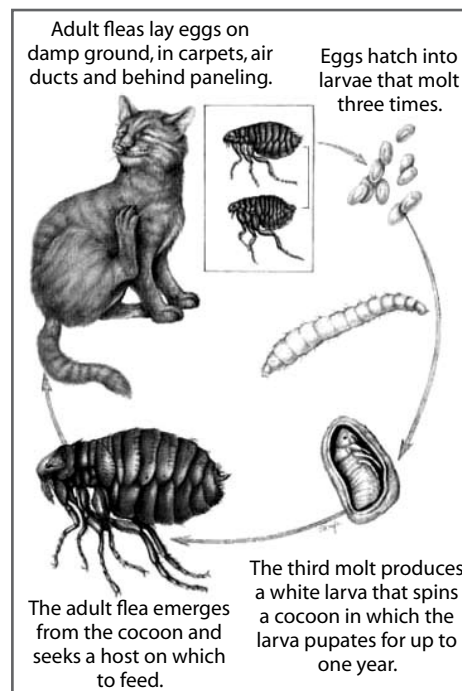
Even indoor cats need flea and tick control because you or other pets in the household may bring fleas into the home. These fleas can lead to a flea infestation.

Apply topicals according to label instructions, ensuring the product is applied to the skin, not on top of the fur and not near the collar. It may be helpful to remove the collar before application, so the collar doesn't absorb the product.

If using a pipette, be sure the pipette is empty after the application (multiple squeezes to the pipette may be necessary to apply the entire dose).

Remember, your pet needs to be dry at the time some topicals are applied and remain dry for 24 hours after application. Be sure to read our instructions.

It can take up to 3 months to get rid of a serious flea infestation because of all of the flea life stages that existed before you started treatment. Flea pupae are protected by their cocoons — all pupae will have to hatch out and be killed as adult fleas on the pet. It can take several weeks for all pupae to hatch from an infested environment.



Sunset View Pet Hospital

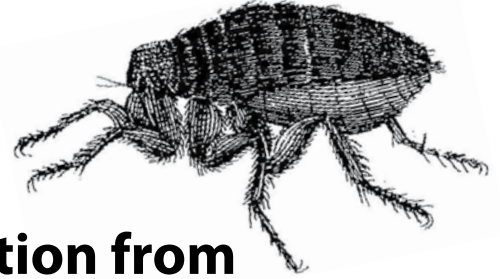
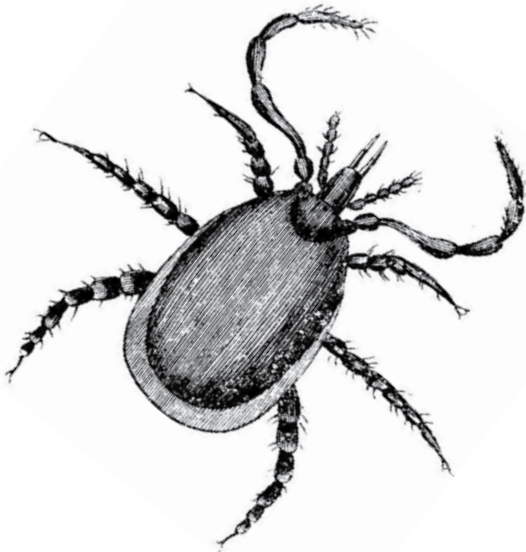
627 West Fifth Street

Wilton, Iowa 52778

E-mail Reminders

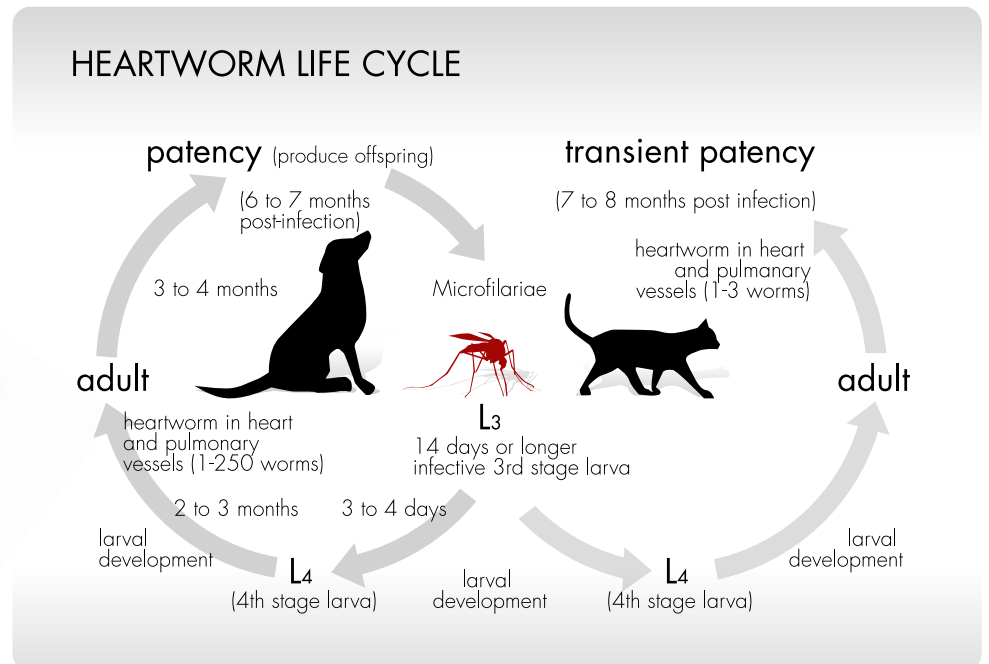
Your pets can't tell you when their medications are due... but we can! Sign up for Pet Medication Alerts at www.RemindMyPet.com. This site is a stand-alone website which allows pet owners to be reminded of ANY medication regardless of manufacturer and is totally FREE! Here is how the reminder service works... you simply register basic information about yourselves and your pet(s) and you will automatically be sent an e-mail or text message whenever it's time to give your pet's medication. The service will even alert you when your supply is about to run out!

You can also sign up for reminders for your pet's heartgard and flea medication at www.Frontline.com and www.Heartgard.com



Year-round Protection from Heartworm and Intestinal Parasites

Internal parasites remain a common threat to dogs. A 2003 AAHA study found that only 48% of the 51 million dogs receiving regular veterinary care were reported to have been dispensed a heartworm preventative. This means that nearly 27 million U.S. dogs receiving regular veterinary care go unprotected each year. Endemic heartworm transmission is well established across much of North America, and longer periods of warm weather can extend the transmission window further, leading to increased risk of infection. In addition to heartworm, free roaming dogs are commonly infected with intestinal parasites and deposit eggs in the environment, creating a future infection risk to young and adult dogs alike. Consistent use of preventatives, healthy pet management practices, and regular veterinary examinations can limit if not eliminate parasitic infections, protecting the health of both pets and people. Every dog deserves year-round protection from parasites.



©Copyright 2007 | American Heartworm Society